



*competition* **commission**  
*south africa*

▫

**IMANUWALI NGOKWESAHLUKO  
SE-14 SOMTHETHO WOKUFINYELELEKA  
OLWAZINI WE-2000  
UMTHETHO WESI-2 WE-2000**

# ITHEBULA LOKUQUKETHWE

## ISETHULO

3

### 1. ISINGENISO

4

### 2. IMINININGWANE NGOKWESAHLUKO SAMA-14 SE-PAIA

IMISEBENZI YEKHOMISHANE YEZEMISEBENZI YOKUNCINTISANA

4

#### 2.2 UKUMA KWEMISEBENZI YEKHOMISHANE YOKUNCINTISANA

5

### 3. IMININGWANE YOKUXHUMANA

6

### 4. UKUFINYELELA KUMAREKHODI AGCINIWE IKHOMISHANE YOKUNCINTISANA

1. UKUDALULA OKUZENZAKALELAYO – ISAHLUKO SAMA-14 (1) (E)

6

2. UKUDALULA NGESICELO 14(1)(D)

7

3. UKUDALULA OKUKHAWULELWE NGOKOMTHETHO WOKUNCINTISANA WAMA-89 WE-1998

7

### 5. IZINQUBO NEZINKAMBISO ZOKUCELA

ULWAZI NOMA AMAREKHODI AKHAWULELWE

8

### 6. IZINQUBO NEZINKAMBISO ZOKUCELA

ULWAZI NOMA AMAREKHODI – ISAHLUKO SE-14(1) (D)

1. IFOMU LESICELO

8

6.2 AMALUNELO OCELAYO

2. IZIMALI EZIKHOKHWAYO

### 7. IZINCWADI EZIBEKIWE

9 -10

### 8. UKUTHOLA KANJANI UKUFINYELELEKA OLWAZINI

10

### 9. IZIXAZULULO EZIKHONA UMA IMIBANDELA

YE-PAIA INGALANDELWA

YIKHOMISHANE YOKUNCINTISANA

11

### 10. UMHLAHLANDELA WESAHLUKO SE-10 – ISAHLUKO SE-14 (1) (C)

12

### 11. UKUFAKWA KOLWAZI OLUSHA KUMANUWALI

13

## ISIXHUEMELO

IFOMU ISICELO SOKUFINYELELEKA KUREKHODI LOMGWAMANDA WOMPHAKATHI

---

## ISENDLALO

Ukuze kwethulwe ukuhlola ukukulingene nokuqondekayo kwesimo sayo, IKhomishane Yokuncintisana njalo ilwela ukuqinisekisa ukuthi ukubika kwayo kanye nokudalula izinkambiso kwabanotho kufanele, kucacile futhi kuyimpumelelo. UMthetho Wokufinyeleleka Olwazini (i-PAIA) wesi-2 we-2000 wenziwe ukuba wenze ilungelo lokufinyeleleka olwazini lisebenze njengoba ligcinwe kuMthethosisekelo waseNingizimu Afrika. IKhomishane Yokuncintisana ikubuka lokhu hhayi njengomdanti wokulandela umthetho kuphela, kodwa njengethuba lokusebenza ngokuphathwa kolwazi ngendlela ephelele nembandakanyayo.

IKhomishane Yokuncintisana ibeka ukugxila ekuphoqeleleni ubusobala nobusobala uthi iyaqhubeka nokuzibophezelela kumigomo yokuvuleleka, isithunzi, ukubika kanye nokuzibophezela kubantuu abanotho.

IKhomishane Yokuncintisana iyakubona ukuthi ukuphatha inhlangotho kuyinkundla ebalulekile futhi, ngaleyo ndlela, izinhlelo zayo zokuphatha inhlangotho ziyahlolwa futhi njalo ukuqinisekisa ukuthi zihlala zisemazingeni omhlaba futhi ziyaqhubeka nokufanela umsebenzi weKhomishane Yokuncintisana njengoba iguquka. Inhlangotho ngaleyo ndlela ilandela iPhrothokholi Yokuphathwa Kwenhlangotho eMkhakheni Kahulumeni (1997), uMthetho Wekuphathwa Kwezimali Zomphakathi we-1999 ("i-PFMA") kanye noMbiko kaKing III Wokuphathwa Kwezinhlangano (2008). IKhomishane Yokuncintisana futhi iboshezwe ukuba iphoqelegele uMthetho Wokuncintisana wama-89 we-1998: IsiQephu sesi-5, isaHluko sama-45 – Ulwazi Oluyimfihlo.

Lena yimanuwali ebuyekeziwe yeKhomishane Yokuncintisana ngokulandela uMthetho Wokufinyeleleka Olwazini wesi-2 we-2000 (IsaHluko se-14) futhi sethamba ukuthi lokhu kuzokusiza ekuqaleni ulwazi kuKhomishane Yokuncintisana.

## 1. ISINGENISO

UMthetho Wokuncintisana wama-89 we-1999 (kamuva obizwa ngoMthetho) uhlinzeka ngokuthunywa okubeka ezandleni zeKhomishane Yokuncintisana umsebenzi wokuphenya, ukulawula kanye nokuhlola izinqubo ezinemikhawulo, ukungasetshenziswa kahle kwezikhundla ezinkulu kanye nokuhlangana. Uqhubeka uhlinzekele ukusungulwa kwesiGungu Sokuncintisana esinomsebenzi wokwahlulela emidantini efana nalena kanye naseNkantolo Yezikhalazo Zokuncintisana kanye nakweminye imidanti ehlobene nalokhu.

Kubaluleke ngokubonakalayo ukugqamisa ukuthi uMthetho unikeza ngemihlahlandlela emidantini emayelana nokuphathwa kanye nokufinyelela olwazini oluyimfihlo. Ezimweni lapho ulwazi oluyimfihlo lucelwa, uMthetho kanye ne-PAIA uzophoqelelwe ukuqinisekisa ukuthi ukufinyeleleka kuvikelekile futhi kuhlinzekwa ngokuhambelana nemibandela yomunye nomunye wale Mithetho Yephalamende.

Le manuwali izosiza abfakizicelo ukuba baphawule amarekhodi agcinwe yiKhomishane Yokuncintisana kanye nendlela yokufinyeleleka kuwo. Futhi kuhloswe ngayo ukunikeza umhlahlandlela wokuthi ingasetshenziswa kanjani i-PAIA ukuze kutholakale ukufinyeleleka kula marekhodi.

## 2. IMINININGWANE NGOKWESAHLUKO SAMA-14 SE-PAIA

### IMISEBENZI YEKHOMISHANE YEZEMISEBENZI YOKUNCINTISANA

**Ngokwesahluka sama-21(1) soMthetho Wokuncisana wama-89 we-1998, njengoba ushicilelwe, iKhomishane Yokuncintisana inomsebenzi: -**

- Wokuqalisa izinyathelo zokukhulisa ubusobala bemakethe.
- Bokuqalisa izinyathelo zokuthuthukisa ukwazi komphakathi imibandela yalo Mthetho.
- Wokuphenya futhi ihlole ukungenelela okusolwayo kweSiqephu sesi-2.
- Bokuvuma noma yale izicelo zokudedelwa ngokwesiqephu sesi-2.
- Wokugunyaza, ngezimomo noma ngaphandle kwezimo, inqande noma idlulise ukuhlangana ethola izaziso ngakho ngekvesiqephu sesi-3.
- Wokuxoxisana futhi iphethe imiyalo yokuvuma ngokwesahluko sama-49 D.
- Wodlulisela imidanti kusiGungu Sokuncintisana, futhi ivele ngaphambu kwesiGungu, njengoba kudingwa yilo Mthetho.
- Wokuxoxisana nanoma yisiphi siphathimandlasolawulo ngezivumelwano zokuhlela nokwenza ukuvumelana kokusebenza kwamalungelo namandla omthetho kumidanti

---

yokuncintisana ngaphakathi kwemboni noma umkhakha ofanele, kanye nokuqinisekisa ukusebetshenziswa okuhlelekile kwemigomo yalo Mthetho.

- Wokubamba iqhaza ezinqutsheni zanoma iziphi isiphathimandla solawulo.
- Wokweluleka, kanye nokwamukela izeluleko ezivela kunoma isiphi isiphathimandla solawulo.
- Emuva kwesikhathi, wokubukeza umthetho kanye nezimiso zomphakathi, futhi ubikele ungqongqoshe mayelana nanoma ngabe imuphi umbandela ovumela ukuziphatha okungekona ukuncintisana, futhi
- Wokubhekana nanoma ngabe yimuphi umdanti odluliselwe kulo yisiGungu.

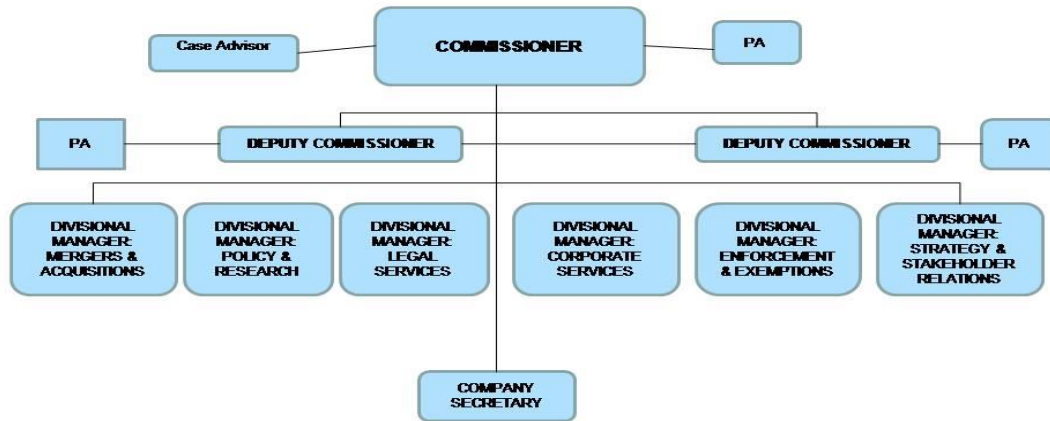
**Ikhomishane Yokuncintisana futhi: -**

- Ingabikela uNgqongqoshe woMntyango Wezokuhweba Nezimboni (uNgqongqoshe) nganoma ngabe imuphi umdanti omayelana nokusebenza kwalo Mthetho.
- Iphenye ngombiko iphinde ibike kuNgqongqoshe nganoma ngabe imuphi umdanti mayelana nezinhloso zalo Mthetho.
- Ingenz nanoma ngabe imuphi umsebenzi ewunikiwe ngokwalo Mthetho noma ngokwanoma imuphi omunye uMthetho.

**2.2 UKUMA KWEMISEBENZI YEKHOMISHANE YOKUNCINTISANA**

ukufeza izinhloso zayo, iKhomishane izihlele njengoba kulandela: -

## COMPETITION COMMISSION: ORGANOGRAM



1

### 3. IMININGWANE YOKUXHUMANA

#### UMPHATHI-LWAZI

Igama	Isikhundla	Inombolo yocingo:	Inombolo yefeksi:	I-imeyili
UMnu. Tembinkosi Bonakele	UKhomishane	+27 12 394 3200	+27 12 394 0166	<a href="mailto:ccsa@compcom.co.za">ccsa@compcom.co.za</a>

#### USEKELA-MPHATHI-LWAZI

Igama	Isikhundla	Inombolo yocingo:	Inombolo yefeksi:	I-imeyili
Unks. Gwatkin Tracy	Unobhala Wenkamani	+27 12 394 3200	+27 12 394 0166	<a href="mailto:ccsa@compcom.co.za">ccsa@compcom.co.za</a>

**Ikheli lendawo** Block C, the DTI Campus  
77 Meintjies Street  
Sunnyside  
Pretoria, TSHWANE

**Ikheli leposi** Private Bag X 23  
Lynnwood Ridge  
0040

---

#### 4. UKUFINYELELA KUMAREKHODI AGCINIWE IKHOMISHANE YOKUNCINTISANA

##### 1. UKUDALULA OKUZENZAKALELAYO – ISAHLUKO SAMA-14 (1) (E)

Lonke ulwazi olukhona ku-website ethi: [www.compcom.co.za](http://www.compcom.co.za) ludalulwe ngokuthanda. Olunye ulwazi olutholakala ngokuzenzakalelayo lumbandakanya:

<b>UHLOBO</b>	<b>INCAZELO</b>
imibiko	<ul style="list-style-type: none"><li>• Imibiko yonyaka</li><li>• Isaziso ngokudluliswa</li><li>• IziTatimende Zezezimali Zonyaka</li></ul>
Izinqubomgomo Ulwazi lwabanotho	Inqubomgomo Yokuzwela Kwenhlangano <ul style="list-style-type: none"><li>• Izinkambiso</li><li>• Amazinga Ezinsizo</li></ul>
Ukushicilelwa	<ul style="list-style-type: none"><li>• Amanyuziletha</li><li>• Amabhrosha</li><li>• Izaziso</li><li>• Ukwazisa ngolwazi olusha</li><li>• Amaphosta</li><li>• Izincwajana</li></ul>
Izivumelwano	<ul style="list-style-type: none"><li>• Amaphamfulethi</li><li>• Ama-MOU anabalawuli bomkhakha</li><li>• Ama-MOU anamanye ama-ejensi</li></ul>

##### 4.2 UKUDALULA NGESICELO 14(1)(D)

<b>UHLOBO</b>	<b>INCAZELO</b>
Izimo ezihlobene	<ul style="list-style-type: none"><li>• Imibiko yokuhlangana (Engeyona imfihlo)</li><li>• Imibiko yokuphoqelela (Engeyona imfihlo)</li><li>• Izicelo zokudedelwa</li><li>• Imibono yokweluleka</li><li>• Izaziso zezikhalazo (iFomu cc1) (kodwa hhayi incazelo yokuziphatha enanyathiselwe)</li></ul>
Amaphepha Ocwaningo	<ul style="list-style-type: none"><li>• Iziifundo zomkhakha</li><li>• Ukwazisa kwezomnotho</li><li>• Imibiko ngemibuzo yemakethe</li></ul>

Ukuqeqesha namawekhshophu Ukuphathwa kwezimali	<ul style="list-style-type: none"> <li>• Amaphepha/Izinkulumo zezinkomfa</li> <li>• Izabelo-zimali</li> <li>• izinqubomgomo zezezimali</li> <li>• Imibiko Yomcwaningi-Mabhuku-Jikelele</li> <li>• Amaminithi Ekomidi Loncwaningo-mabhuku</li> </ul>
Ezabasebenzi	<ul style="list-style-type: none"> <li>• Imibiko yokulingana</li> <li>• imibiko yokuqeqesha</li> <li>• izinqubo zabasebenzi</li> </ul>
Ukuthenga	<ul style="list-style-type: none"> <li>• Irejista Yempahla</li> <li>• Amathenda</li> <li>• Amaminithi Emihlangano Yekomidi Lamathenda</li> <li>• Izivumelwano Nabahlinzeki-Zinsizo</li> </ul>

#### **4.3 UKUDALULA OKUKHAWULELWE NGOKOMTHETHO WOKUNCINTISANA wama-89 we-1998**

NgokwesaHluko sama-45 soMthetho Wokuncintisana, umuntu ofuna ukufinyeleleka olwazini olubekwe ngaphansi kwekleyimu yobumfihlo angafaka isicelo kusiGungu Sokuncintisana, esizobe sesinquma ukuthi ulwazi luyimfihlo noma aluyona imfihlo futhi uma sithola ukuthi ulwazi luyimfihlo, sikhuphe umyalo ofanele mayelana nokufinyeleleka. Imininingwane yokuxhuna nesiGungu Sokuncintisana ithi:

Ikheli lendawo:	Block C, 3rd Floor the dti campus 77 Meintjies Street Sunnyside Pretoria, TSHWANE
Ikheli leposi	Private Bag X 23 Lynnwood Ridge 0040
Ucingo	+27 12 394 3300
Inombolo yefeksi	+27 12 394 0169
Ikheli le-Website	<a href="http://www.comptrib.co.za">www.comptrib.co.za</a>
Ikheli le-imeyili	<a href="mailto:ctsa@comptrib.co.za">ctsa@comptrib.co.za</a>



---

## **5. IZINQUBO NEZINKAMBISO ZOKUCELA UKUDALULWA KOLWAZI NOMA AMAREKHODI ANEMIKHAWULO**

**Umfaksicelo uzonikwa ukufinyeleleka kurekhodi leKhomishane uma:**

- umafaksicelo elandela zonke izidingo zenkambiso eziseMthethweni ezimayelana nesicelo sokufinyeleleka kulelo rekhodi; futhi
- Ukufinyeleleka kulelo rekhodi kungaliwe nganoma ngasiphi isizathi esishiwo eMthethweni.
- Irekhodi lingafakiwe ohlwini "lolwazi oluyimfihlo" ngokoMthetho Wokuncintisana, noma
- IsiGungo Sokuncintisana siyale ukuba kunyeleleke kwirekhodi eliyimfihlo.

## **6. IZINQUBO NEZINKAMBISO ZOKUCELA ULWAZI NOMA AMAREKHODI – ISAHLUKO SE-14(1) (D)**

### **1. IFOMU LESICELO**

- <sup>1</sup>Umfakisisicelo kufanele afake ngefomu elifanele, isiXumelo A lapha, ekhelini leKhomishane, ngefeksi noma nge-imeyili.
- Umfakisisicelo kufanele asho uma isicelo ngekopi lerekhodi noma uma umfaksicelo ethanda ukuhlola irekhodi emahhovisi eKhomishane Yokuncintisana.
- Umfakisisicelo kufanele ashi uma, ukwengeza kwimpendulo ebhaliwe yesicelo serekhodi, engathanda ukuba aziswe ngesinqumo nganoma ngayiphi indlela, isib. ngocingo.
- Uma umfakisisicelo ecela ulwazi elucelela omunye umuntu, isikhundla sokuthi isicelo usenza engubani kufanele asisho.
- uma ufakisisicelo engakwazi ukufunda noma ukubhala noma enokukhubazeka, anagasenza isicelo serekhodi ngomlomo. Umphathi-lwazi noma isiphathimandla esigunyazwe ngemfanelo sizogcwalisa ifomu sigcwalisele umfaksicelo futhi simnikeze ikopi ngokunjalo [s 18 (3)].

---

<sup>1</sup>Ligaywe kuGazethi Kahulumeni ( iSaziso Sikahulumeni esingu-R187 - somhla zi-15 Febhuwari 2002) (iFomu A)

- Umfakisiselo kufanele akhokhe imali efanele.

## 2. Amalungelo Omfakisiselo:

- Uma umfakisiselo ecela ukufinyeleleka kurekhodi ngohlobo oluthile, umfakisiselo unelungelo lokufinyeleleka ngendlela eceliwe ngaphandle uma ukwenzenjalo kuzothikameza ngokungafanele ukusebenza kweKhomishane Yokuncintisana, noma kone irekhodi, noma kuzonyathela amalungelo okhiqiziwe okungekona okoMbuso noma okweKhomishane Yokuncintisana.
- Uma irekhodi lingabhaliwe, ukufika ezingeni elikhonekayo, lingabukwa noma lilalelwe emahhovisi eKhomishane.
- UUma ngezizathu ezingenzeka ukufinyeleleka kungeke kwanikezwa ngohlobo oludingekayo kodwa kunganikezwa ngenye indlela, imali ezobizwa ingeke yedlula imali umfakisiselo abezoyikhokha uma ukufinyelele bekuhlinzekwa ngendlela ayicelile.

## 3. IZIMALI EZIKHOKHWAYO

**Kunezinhlalo ezimbili zezimali okudingeka ukuba zikhokhwe ngokoMthetho, okuyimali yesicelo kanye nemali yokufinyeleleka [s 22:]**

Umfakisiselo ofuna ukufinyeleleka kwirekhodi eliphethe ulwazi ngaye akudingekile ukuba akhokhe imali yesicelo. Wonke umfakisiselo kufanele akhokhe imali yesicelo edingekayo:

- UMphathi-lwazi uzokwazisa umfakisiselo (ngaphandle uma ezicelela ulwazi ngaye) ukuba akhokhe imali emisiwe (uma ikhona) ngaphambu kokuba kusetshenzwe isicelo.
- Imali yesicelo ekhokhwayo ngama-35. Umfakisiselo angafaka isicelo enkantolo aphikise ukunikeza noma ukukhokha imali yesicelo.
- Ngemuva kokuba umphathi-lwazi ethathe isinqumo ngesicelo, umfakisiselo uzokwaziswa ngesinqumo ngendlela umfakisiselo acele ukuba aziswe ngayo.
- Uma isicelo sivunyiwe, imali yokufinyeleleka kufanele ikhokhelwe ukucingwa, ukulingisana, ukukhiqiza kanye nanoma isiphi isikhathi esidingekayo ukuba ukwenza lokhu ngemfanelo, kumbandakanya isikhathi esingaphezulu kwaleso samahora abekiwe okufuna nokulungiselela ukudalulwa kwerekhodi.

---

## 7. IZINCWADI EZIBEKIWE

7.1 Imali yekopi yemanuwali ngama-R0,60 onke amakopi afothokopiwe ekhasi ubukhulu balo bungu-A4 noma ingxenye ngokunjalo.

7.2 Izimali zokukhiqiza irekhodi zinjengoba zilandela:

<b>UHLOBO LOKUKHIQIZA</b>	<b>IMALI</b>
a) Onke amafothokopi ubukhulu bekhasi bungu-A4 noma ingxenye ngokunjalo	Ama-R1.00
b) Onke amakopi agayiwe obukhulu bekhasi obungu-A4 noma ingxenye ngokunjalo agcinwe kwikhompyutha noma ngohlobo olufundeka ngomshini	Ama-R1.00

Ikopi enguhlobo olufundeka ngekhompyutha ku-

i. isitifi diskhi	Ama-R40,00
ii. ikhompekthi diskhi	ama-R40,00
c) (i) Ukubhalwa phansi kwemifanekiso ebukwayo, ubukhulu bekhasi bungu-A4 noma ingxenye ngokunjalo	ama-R22,00
(ii) Ikopi yezinto ezibukwayo	ama-R22.00
d) (i) Ikopi ebhalwe phansi yemisindo erokhodiwe , yobukhulu bekhasi obungu-A4 noma ingxenye ngokunjalo	ama-R12,00
(ii) Ikopi yemisindo erekhodiwe	ama-R17,00

7.3 Imali yesicelo ekhokhwa yiwo wonke umfakisicelo, ngaphandle kozifakela yena isicelo, ama-R35,00.

7.4 Izimali zokufinyeleleka ezikhokhwa ngumfakisicelo okukhulunywe ngazo kumthetho wesi-7 (3) zinjengoba zilandela:

(1)

<b>UHLOBO LOKUKHIQIZA</b>	<b>IMALI</b>
---------------------------	--------------

- a) Onke amafothokopi ubukhulu ama-R1.00  
bekhasi bungu-A4 noma  
ingxenye ngokunjalo
- b) Onke amakopi agayiwe obukhulu ama-R1,00  
bekhasi obungu-A4 noma ingxenye  
ngokunjalo agcinwe  
kwikhompyutha noma ngohlobo  
olufundeka ngomshini
- c) Ikopi engohlobo olufundeka  
ngekhompyutha ku-
  - (i) isitifi diskhi Ama-R40,00
  - (ii) ikhompekthi diskhi ama-R40,00
- d) Ukubhalwa phansi ama-R22,00  
kwemifanekiso ebukwayo,  
ubukhulu bekhasi bungu-A4 noma  
ingxenye ngokunjalo  
Ikopi yezinto ezibukwayo ama-R22.00
- (i) Ikopi ebhalwe phansi yemisindo ama-R12,00  
erekhodiwe , yobukhulu bekhasi obungu-  
A4 noma ingxenye ngokunjalo
- f) Ukucinga nokulungisa irekhodi  
ukuze lidalulwe, ama-R15.00 ihora  
ngalinye noma ingxenye yehora,  
kushiya ngaphandle ihora lokuqala,  
ngokwemfanelo elingekayo  
ekucingeni nasekulungiseni okufana  
nalokhu.

(2) Ukwenzela izinhloso zokunquma ukuthi ingabe idiphozi iyakhokhwa noma ayikhokhwa ngumfakisicelo ngaphambu kokuba kulungiselelwe ukudalulwa kwerekhodi, okulandelayo kuyasebenza:

- a) Amahora ayisithupha ayisikhathi esifanele esisetshenziselwa ukulungisa irekhodi ngaphandle kokuba kukhokhwe idiphozi;
  - b) Uma isikhathi esidingekayo ukulungisa sedlula amahora ayisithupha, kuzodingeka ukuba kukhokhwe idiphozi; futhi
  - c) Le diphozi ilingana nokukodwa kobuthathu bemali yokufinyeleleka ekhokhwayo.
- (3) Imali yokuposa okuyiyona ikhokhwa uma ikopi yerekhodi kufanele ithunyelwe ngeposi kumfakisicelo.

---

## 8. UKUTHOLA KANJANI UKUFINYELELEKA OLWAZINI

Ukufinyeleleka kuzinsizo zeKhomishane Yokuncintisana, izicelo kufanele zenziwe zibhekiswe kuKhomishani noma umuntu okhethiwe weKhomishane.

Inhloko yoMnyango weKhomishani Weregistri	I-HOD - iRejistri
Ikheli lendawo:	Block C, the dti campus 77 Meintjies Street Sunnyside Pretoria, TSHWANE
Ikheli leposi	Private Bag X23 Lynnwood Ridge 0040
Ucingo	+27 12 394 3200
Inombolo yefeksi	+27 12 394 0166
Ikheli le-Website	<a href="http://www.compcom.co.za">www.compcom.co.za</a>
Ikheli le-imeyili	<a href="mailto:ccsa@compcom.co.za">ccsa@compcom.co.za</a>

## 9. IZIXAZULULO EZIKHONA UMA IMIBANDELA YE-PAIA INGALANDELWA YIKHOMISHANE YOKUNCINTISANA

IKhomishane Yokuncintisana ayinayo indlela yokukhalaza kwangaphakathi ukuze kuqhuthwe izikhalazo eziphikisa izinqumo zoMphathi-Lwazi kanye noSekela-Mphathi-Lwazi.

Ingxenywe engajabule ingafuna isixazululo ngendlela yokufaka isicelo kuMantshi wenkantolo ngokweGazethi Kahulumeni engunombolo 585 yomhla zi-14 Meyi 2004. Ekulalelweni kwesicelo esifana nalesi inkantolo ingakhipha nanoma imuphi umyalo ongenzeleli futhi nowokulingana.

## 10. UMHLAHLANDELA WESAHLUKO SE-10 – ISAHLUKO SE-14 (1) (C)

UMhlahlandlela wokuthi usetshenziswa kanjanu uMthetho Wokufinyeleleka Olwazini walandelwa yiKhomishani Yamalungelo YaseNingizizimu Afrika. Nanoma iyiphi imibuzo emayelana noMhlahlandlela kufanele ibhekiswe ku-SAHRC kuleli kheli elilandelwayo:

Private Bag X2700  
Houghton

2041

Ucingo: (011) 484 8300

Ifeksi: (011) 484 7146

**11. UKUFAKWA KOLWAZI OLUSHA KUMANUWALI**

Lo Mhlahlandlela uzotholakala emahhovisi eKhomishane YaseNingizimu Afrika Yamalungelo EsiNtu, emahhovisi eKhomishane Yokuncintisana, kanye naku-website kaKhomishane Yokuncintisana.

---

**IFOMU A**

**ISICELO SOKUFINYELELEKA KUREKHODI LOMGWAMANDA WOMPHAKATHI**

Isahluko se-18 (1) soMthetho Wokufinyeleleka Olwazini we-2000 (uMthetho wesi-2 we-2000)

[ISimiso sesi-2]

LE NGXENYE ISETSHENZISWA NGUMNYANGO:

INOMBOLO YEREFRENSI:.....

Isicelo samukelwe ngu-(shono isikhundla ngokomsebenzi, igama nesibongo somphathi-lwazi/usekela-mphathi-lwazi).

Imali yesicelo (uma ikhona): R .....

Idiphozi (uma ikhona): R .....

Imali yokufinyeleleka: R .....

ISIGINESHA YENHLOKO YEREJISTRI: .....

**A. Imininingwane yomgwamanda kahulumeni**

Umpathi-lwazi/uSekela-mphathi-lwazi:

.....  
.....

**B. imininingwane yomuntu ofaka isicelo sokufinyeleleka kwirekhodi**

(a) Imininingwane yomuntu ocela ukufinyeleleka kwirekhodi kufanele inikezwe ngezansi.

Nikeza ngekheli futhi/noma inombolo yefeksi yaseRiphabhlikhi lapho kufanele ulwazi luthunyelwe khona. kufanele inikezwe

© Ubufakazi bokuthi isicelo senziwa njengobani ngokwesikhundla, uma bukhona, bufanele bufakwe.

Amagama aphelel nesibongo:.....

Inombolo kamazisi/ye-ID:.....

Ikheli leposi: .....

Inombolo yefeksi:.....

Inombolo yocingo: .....

Ikheli le-imeyili: .....

Isikhundla sokuthi isicelo senziwa njengobani uma senziwela omunye umuntu:

### **C. Imininingwane yomuntu ofakelwa isicelo**

Lesi sahluko kufanele sigcwaliswe kuphela uma isicelo solwazi senziwela omunye umuntu.

Amagama aphelel nesibongo:.....

Inombolo kamazisi/ye-ID:.....

### **D. Imininingwane yerekhodi**

(a) Hlinzeka ngemininingwane ephelile yerekhodi okucelwa ukufinyeleleka kulo, kumbandakanya inombolo yereferensi uma uyazi, ukwenzela ukuthi litholakale irekhodi.

(b) Uma isikhala osinikiwe singanele, sicela uqhubeke ekhasini elehlukile bese ulinamathisela kuleli fomu. Umfakisicelo kufanele asayinde onke amaphepha angeziwe.

1. Ukuchazwa kwerekhodi noma izingxenye ezifanele zerekhodi:



- 
2. Inombolo yerefrensi, uma ikhona:
  3. Nanoma ngabe imiphi eminye imininingwane yerekhodi:

**E. Izimali ezikhokhwayo**

- (a) Isicelo sokufinyeleleka kwirekhodi, ngaphandle kwirekhodi eliphethe ulwazi ngawe, sizosetshenzwa kuphela ngemuva kokuba isicelo sesikhokhelwe.
- (b) Uzokwaziswa ngesamba semali edingeka ukuba ikhokhwe njengemali yesicelo.
- (c) Imali ekhokhwayo yokufinyeleleka kwirekhodi ilele ohlotsheni ukufinyeleleka okudingeka ngalo futhi nasesikhathini esidingekayo ukucinga nokulungisa irekhodi.
- (d) Uma ufanelekile ukuba udedelwa ukuba ukhokhe nanoma ngabe iyiphi imali ekhokhwayo, sicela usho isizathu sokudedelwa.

Isizathu	sokudedelwa	ukuba	ukhokhe
izimali:.....			
.....			

**F. Uhlobo lokufinyeleleka kwirekhodi**

Uma uvinjwe ukukhubazeka ukuba ufunde, ubuke noma ulalele irekhodi ngohlobo ukufinyeleleka okuhlinzekwe ngalo ku-1 ukuya ku-4 lapha ngezansi, shono ukukhubazeka kwakho futhi usho uhlobo irekhodi elidingeka ngalo.

Ukukhubazeka: .....	Uhlobo irekhodi elidingek a ngalo:
---------------------	---

Faka uphawu u-"X" ebhokisini elifanele.

AMANOTHI:

- (a) Ukukhombisa kwakho uhlobo oludingekayo lokufinyeleleka kulele ohlotsheni irekhodi elitholakala ngalo.
- (b) Ukufinyeleleka ngohlobo oluceliwe kunganqathswa ezimweni ezithile. Kulezi zimo uzokwaziswa uma ukufinyeleleka kuzotholakala ngolunye uhlobo.
- (c) Imali ekhokhwayo yokufinyeleleka kwirekhodi, uma ikhona, izonqunywa kancane ngohlobo lokufinyeleleka oluceliwe.

**1. Uma irekhodi linguhlobo olubhaliwe noma olugayiwe -**

Ikopi yerekhodi\*

Ukuhlolwa  
kwerekhodi

**2. Uma irekhodi lakhiwe yizinto ezibukwayo -**

(Lokhu kumbandakanya izithombe, amaslayidi, okurekhodiwe kwevideo, imifanekiso eyakhiwe ngekhopyutha, imidwebo, njll.)

Ukubuka izithombe

Ikopi yezithombe\*

**3. Uma irekhodi lenziwe ngamagama arekhodiwe noma ngolwazi olungakhiqizwa ngomsindo -**

---

Ukulalela oqoshiwe lomsindo)	umsindo (ikhasethi	Umbh alo woms indo oqosh iwe*  (umb halo obhal iwe noma ogayi we)
------------------------------------	-----------------------	--

**4. Uma irekhodi ligcinwe kwikhompyutha noma ngohlobo olufundekayo lukagesi noma lomshini -**

Ikopi yerekhodi*	egayiwe	Ikopi egayiwe yolwazi olususelwa kwirekhodi*
---------------------	---------	---

YEBO

\*Uma ucele ikopi noma umbhalo werekhodi (elingenhla), ingabe uthanda ukuba ikopi noma umbhalo werekhodi uposelwe wena?

Imali yokuposa iyakhokhwa

Qaphela ukuthi uma irekhodi lingatholakali ngolimi oluthandayo, ukufinyeleleka kungatholakala ngolimi irekhodi elitholakala ngalo.

Yiluphi ulimi ongathanda ukuthola ngalo irekhodi?  
IsiZulu

(Sicela ufake uphawu ebhokisini elifanele)

ISepedi

IsiNqisi

**D. Isaziso ngesinqumo mayelana nesicelo sokufinyeleleka**

Uzokwaziswa ngokubhaliwe ngesinqumo ukuthi isicelo sakho sivunyiwe/senqatshiwe. Uma ufisa ukwaziswa ngenye indlela, sicela uyisho leyo ndlela futhi uhlinzeke ngemininingwane evumela ukuhambisana nesicelo sakho.

Ungathanda ukwaziswa kanjani ngesinqumo mayelana nesicelo sakho sokufinyeleleka kwirekhodi?

Isayindwe e-/o- ngalolu suku lomhla zi-..... ku- ..... wonyaka we-20