



PPO Serve

Integrated Clinical Consortia™

IN COLLABORATION WITH



FOUNDATION FOR
PROFESSIONAL DEVELOPMENT

Responses to the HMI Provisional findings:

April 2019 workshops

Dr Brian Ruff

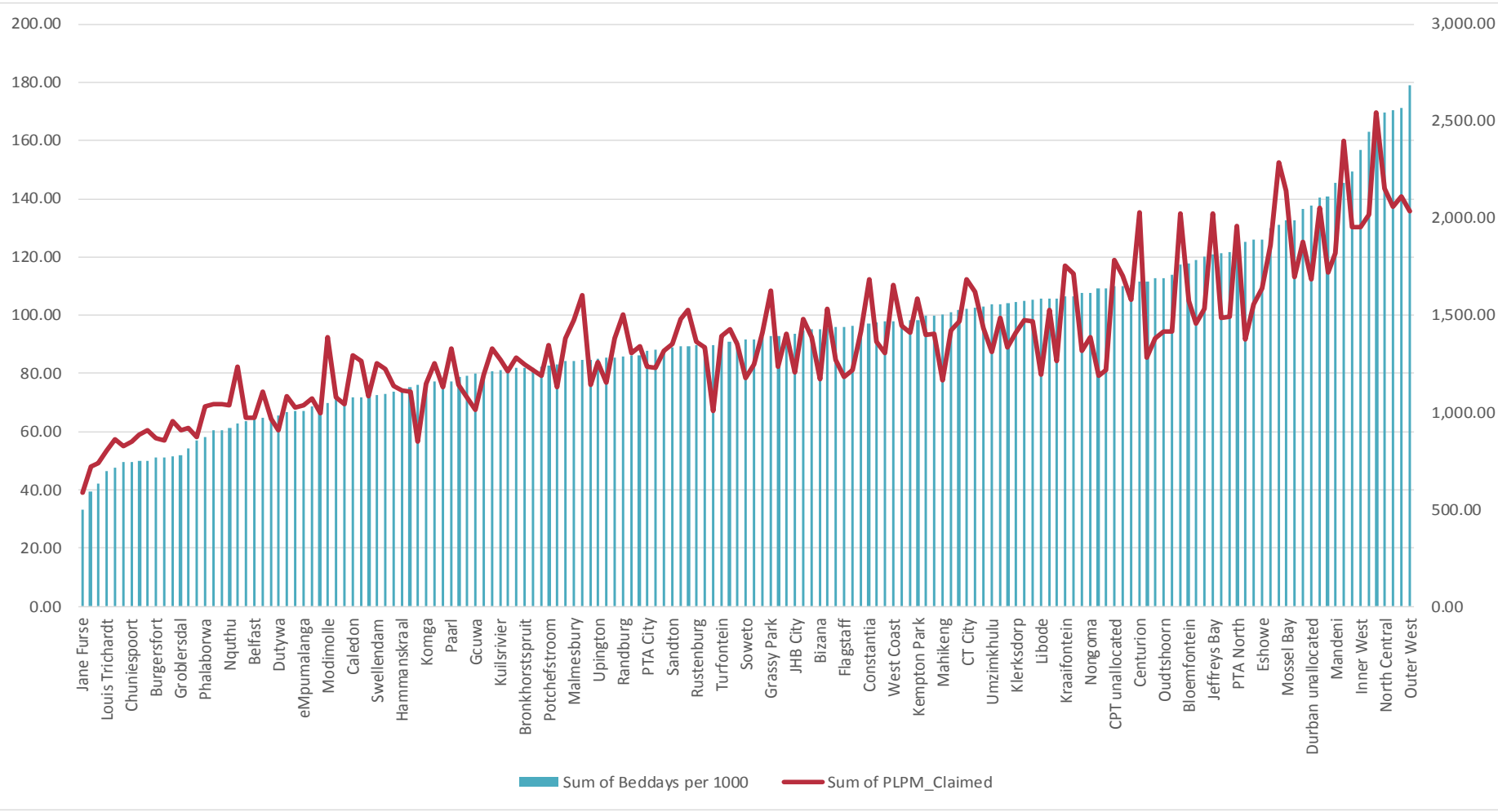
Seminar 3: Supplier Induced Demand

in the SA private healthcare sector

Seminar 3: Supplier Induced Demand in the SA private healthcare sector

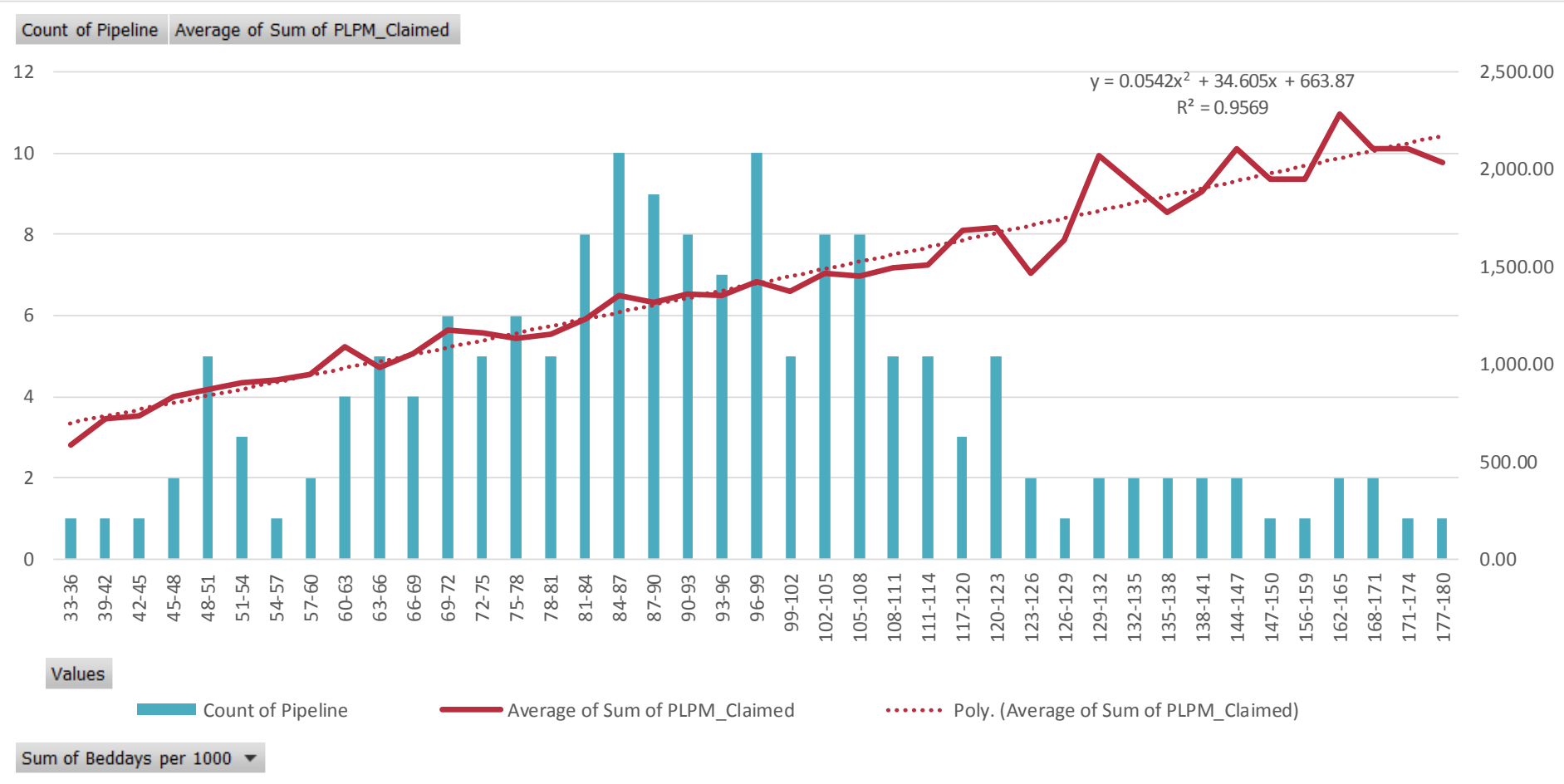
- There is currently huge variation between regional performance and costs
- Regional PLPMs are driven by hospital bed days
- PLPLM differences correlate with **avoidable admissions/ PQIs** (preventative quality indicators)
- PQIs are admissions that shouldn't happen if the patient is well managed by the primary healthcare service – it is a **form of over-servicing**

Seminar 3: Supplier Induced Demand



Regional Bed days and PLPMs: hospitalisation is the major driver of the PLPM

Seminar 3: Supplier Induced Demand

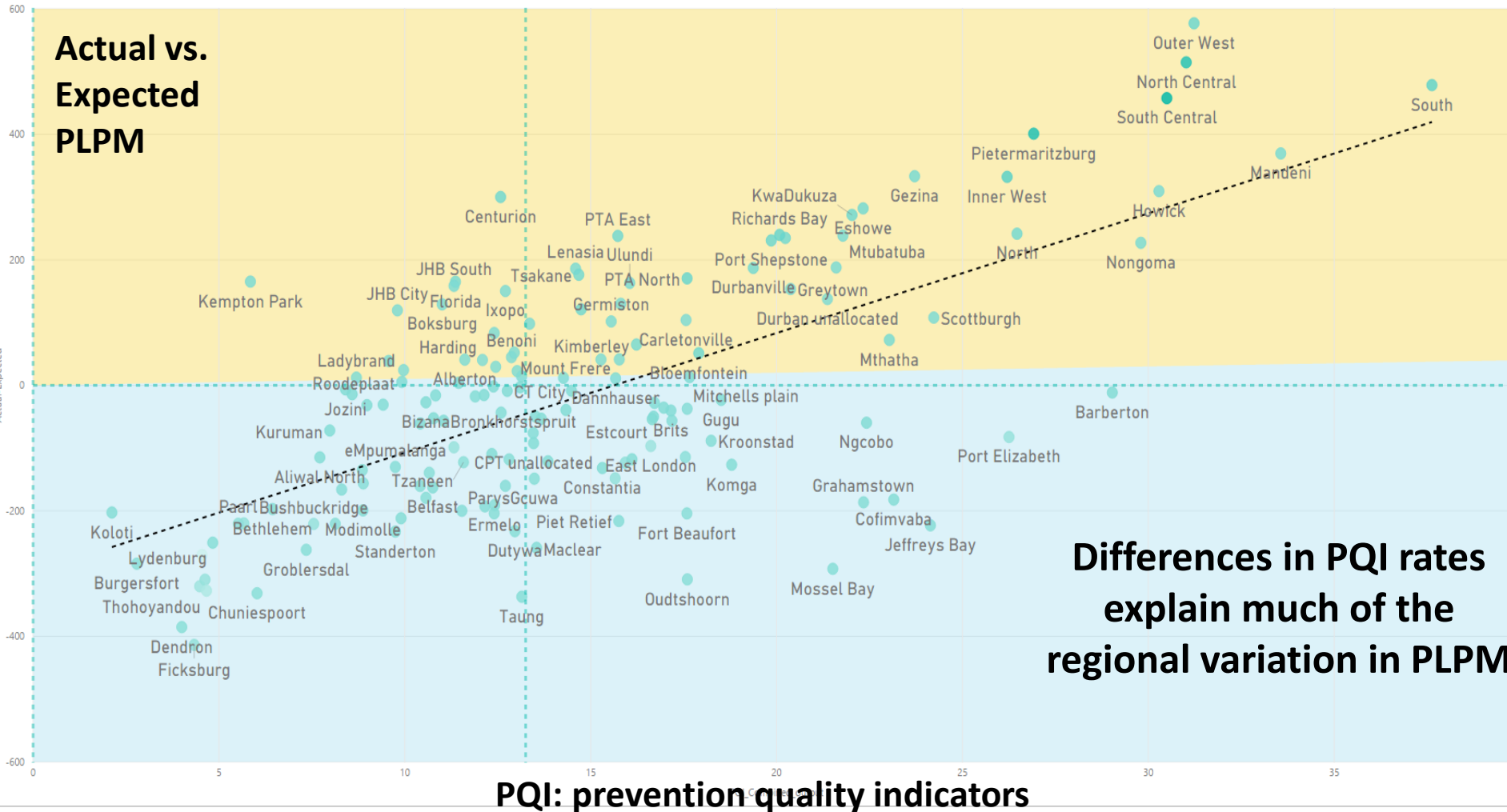


Regions in Bed Day bands - wide variation; opportunity for improvement

Seminar 3: Supplier Induced Demand



Back to Report | ACTUAL-EXPECTED VS PQI



Reduced variation would make care more affordable



PPPO Serve

Integrated Clinical Consortia™

IN COLLABORATION WITH



FOUNDATION FOR
PROFESSIONAL DEVELOPMENT